

The Official Publication of the Ashburn Village Community Association

THE VILLAGER

December 2021/January 2022

Volume 31, Number 10

Happy Holidays

Residents...

**Don't miss out on anything
going on in Ashburn Village.
Make sure you are signed up
For Email News Blasts
(see page 4 for information).**

 **ASHBURN
VILLAGE**



ASHBURN VILLAGE COMMUNITY ASSOCIATION, INC.

Office Hours: Monday-Friday 8:00am - 5:00pm

44025 Courtland Drive ~ Ashburn, VA 20147

Phone: 703.723.7910 ~ Fax: 703.723.4674

AshburnVillage.org ~ Twitter: @Ashburn_Village

The Villager
Deadline the 1st Of Every Month
 (with the exception of December & June as there are **NO JANUARY** or July issues).

Advertising Info:

IMAGERY
 PRINT & PROMOTIONS

melissa@imageryprintpromotions.com
 or **imageryads@aol.com**
call 703.723.3400 or download contracts from
www.ImageryPrintPromotions.com

THE VILLAGER EDITORIAL POLICY - Neither the Ashburn Village Homeowners Association, the Ashburn Village Board of Directors, the Communication Committee, Staff, Publisher or Residents make any representation as to the validity or qualifications of any advertiser nor do they endorse or recommend. The publisher reserves the right to decline any articles and/or pictures that are submitted or advertisements for any reason they deem appropriate. All submissions to "The Villager" are included or declined at the prerogative of the Community Management Staff and/or Publisher. Submitted articles are the opinion of the author and do not necessarily reflect the opinions of the AVCA or the Board of Directors or Publisher. Articles submitted are subject to editing for clarity and length and should not be self-promoting or promoting a family member, friend, business, etc. The subject should be of general interest to our Ashburn Village Residents. "The Villager" is not an appropriate vehicle for the promotion of any political party, candidate or platform and/or religious affiliation. Articles appearing in "The Villager" may not be reproduced in any manner without the express permission of the Publisher.

Ashburn Eyecare ASSOCIATES

*Serving the community for over 20 years
 with personal and expert care combined
 with the latest technology!*

- Comprehensive Eye Examinations - Adults & Children
- Treatment of Eye Disease/Emergencies of the Eye Using the Latest Advanced Technologies
- Advanced Therapies for Relief of Dry Eye
- Laser Vision Correction Consultations
- Vision Training / Developmental Optometry
- Contact Lens Specialists - RGP, Bifocal, Disposal, Astigmatic, Colors
- Ortho-K/CRT (Non-Surgical Vision Correction)
- Extensive Line of Designer Frames and Sunglasses
- Over 2,000 Frames in Stock (Something for Everyone)
- Licensed, Professional Opticians



- Dr. Robert M. Allen
- Dr. Diana J. Slavin
- Dr. Kelly Joedicke
- Dr. Jennifer Sun
- Dr. Sami Khaldieh
- Dr. John W. Dresely

Doctors of Optometry

Convenient Evening & Weekend Hours ... Most Insurance Plans Accepted ... One Hour Eyeglass Service Available

www.AshburnEyecare.com

44050 Ashburn Village Blvd., Suite 163
Ashburn (Located in the Ashburn Village Shopping Center)
(703) 726-0005

Chantilly Professional Building
3910 Centreville Road, Suite 100 - Chantilly
(703) 830-6380



Inside This Issue

- 4- Phone Contacts, Stay Connected: Email Blast Registration Info, Results from Our Recycling Event
 - 5- President's Message
 - 6- We Want Your Input! Community Tips
 - 7- Our Lakes & Ponds, Safety Corner, Pet Owner Info
 - 8- Snow Removal Policy
 - 9- Association Snow Information, Streets that AVCA Plows
 - 10- Broad Run District School Board Meeting, AVCA 2022 Budget
 - 11- AVCA 2022 Assessments
 - 12- Ashburn Village By The Numbers 2021
 - 14- AV Halloween Decorating Contest Winners
 - 15- Grand Opening of Fincastle Field
- ## THE SPORTS PAVILION
- 16- Introducing Our Newest AVSP Personal Trainer, Cardio Tennis, Winter Tennis
 - 17- Holiday Special Personal Training Package, Beginner's Tennis Class Group Exercise Classes, H.E.L.P. Wellness Expo
 - 18- Swimming - Groups Winter Swim Schedule, Frozen Jets Winter Schedule, Swim Lessons
 - 19- 2022 Winter Tennis Session, Teacher Work Day Camp, Winter Break Camp, Making Spirits Bright - AngelTree
 - 20- AVCA Annual Holiday Lights Contest
 - 21- Santa Shop
 - 22- Ashburn Fire & Rescue Upcoming Events
 - 23- December 2021 Community Calendar, AVSP Holiday Hours

The Annual Meeting was a great success. Thank you to every Homeowner who took the time to vote. Congratulations to the new members of the Ashburn Village Board of Directors. The Board of Directors officers for the 2021-2022 term were selected at the monthly Board meeting on October 26, 2021, and are listed in the adjacent box. The Board is looking forward to the coming year and the ongoing process of keeping Ashburn Village beautiful.



BOARD OF DIRECTORS

PRESIDENT ~ JASON MELLO
VICE PRESIDENT ~ AVIRAT KANHERE
TREASURER ~ ROBERT CROSSETT
SECRETARY ~ ANITA TIERNEY
DIRECTOR ~ MAHIL SANTRAM
DIRECTOR ~ TERRY BRICKERD
DIRECTOR ~ MIKE LITTMAN

The Board of Directors meeting will be held Tuesday, December 7 at 6pm - which will be a combined meeting for November/December. The January Meeting will be on the Tuesday the 25th at 6pm. The agenda will be posted prior to the meeting on the Ashburn Village website: www.AshburnVillage.org. Homeowners who wish to address the Board should contact the AVCA HOA office at 703.723.7910.

Need to contact the Board? Email messages can be sent to BOD@ashburnvillage.org

ASHBURN VILLAGE STAFF

MANAGEMENT TEAM

General Manager ~ Marck Rossy, CMCA®, AMS®, PCAM®
mrossy@ashburnvillage.org

Project & Assistant Manager ~ Ron Rector, CMCA®, AMS®,
rrector@ashburnvillage.org

Resident Services Manager ~ Irene Lovewell, CMCA®, AMS®
irenel@ashburnvillage.org

Finance Manager ~ Andrea Galler, CMCA®
agaller@ashburnvillage.org

STAFF MEMBERS

Member Services ~ Morgan Busick
mbusick@ashburnvillage.org

Accounts Payable ~ Rita Jennings
rjennings@ashburnvillage.org

Accounts Receivable ~ Sarah Burner
sburner@ashburnvillage.org

Covenants Administrator ~ Alexis Perriello
aperriello@ashburnvillage.org

Covenants Inspector ~ Jen Peiler
jpeiler@ashburnvillage.org

Covenants Inspector ~ Clyde Tanksley
ctanksley@ashburnvillage.org

Covenants Inspector ~ Lydia Jessup
Ljessup@ashburnvillage.org

Facilities & Grounds
Jeff Huff (F&G Foreman)

Dick Lane ~ Josh Bragg ~ Jose Santos ~ Lonnie May

Proofreading ~ Donna Linton, RMR-CCR-CLR, Resident

Phone Contacts

Ashburn Village Sports Pavilion (AVSP) 703.729.0581

EMERGENCY

Poison	202.625.5333
Sewer & Water	703.729.7878
State Police	703.771.2533
Washington Gas	703.750.1000

PUBLIC INFORMATION

Ashburn Library	703.737.8100
Ashburn Volunteer Fire Dept	703.729.0006
American Red Cross	703.777.7171
Animal Control/Shelter	703.777.0406
Battlefield Towing	703.378.0059
Dominion VA Power	866.DOM.HELP
Department of Motor Vehicles	866.368.5463
Dulles Airport	703.572.2700
Employment Commission	703.761.4655
Fire (Non Emergency)	571.258.3722
Highway Dept VDOT	703.737.2000
Health Department	703.777.0236

LOUDOUN COUNTY

Animal Control	703.777.0406
Area Agency on Aging	703.777.0257
Board of Supervisors	703.777.0204
Building Permits	703.777.0220
Chamber of Commerce	703.777.2176
Health Department	703.777.0234
Parks & Recreation	703.777.0343
Loudoun Water	571.291.7880
Loudoun Traffic Hotline	703.771.5798
INOVA Loudoun Hospital	703.858.6000
Loudoun Public Schools	571.252.1000
Loudoun Sheriff's Dept Administration	703.777.0407
Loudoun County Sheriff <i>Non-emergency</i>	703.777.1021
Metro	202.637.7000
Miss Utility	800.552.7001
Parks & Recreation	703.777.0343
Planning Department	703.777.0246
Poison Control Hotline	800.222.1222



STAY CONNECTED!

Don't miss Friday Updates and other timely information from AVCA, including special events, trash updates, and inclement weather closures. Just sign up for email blasts on the Association's web page under StayConnected, to receive *Friday Updates*, closure notices, and other Ashburn Village news.

Every homeowner should also have an email address on file with the Association for official communications. Please contact the AVCA office any time that your email address changes.

If you have any questions or need assistance, please call the AVCA office at 703.723.7910.

IT'S EASY TO SIGN UP NOW!

1. GO TO: www.AshburnVillage.org and click on *Stay Connected!*

2. SELECT: *Sign Up Now!*

3. ENTER YOUR INFORMATION: Enter your information in the fields provided and sign up for the email lists that interest you. Be sure to select the AVCA – *General Information*, to get all the weekly updates and official Village emails.

Results From Our Recycling Event

The environmental report for the shredding:

3,989 lbs. of paper

For electronics total weight recycled and keep out of the landfill was:



9,931 lbs. breakdown below:

876 lbs of Printers
435 lbs of Desktop Computers
128 lbs of Servers
325 lbs of Laptops
1475 lbs of TVs and Monitors
81 lbs of Cell Phones
661 lbs Electronics



By Jason Mello

President's Message

Dear Neighbors and Friends,

It is December and this year is coming to a close. Over the past year, our community has continued to pull together to combat the ongoing pandemic. Thank you for supporting our Board, our HOA management team and our residents. We are a diverse community and we must respect each other to build our community. Thank you for truly making our community a welcoming place for all residents.

I'd first like to mention that the Board approved the 2022 Budget for AVCA. We have seen rising costs across multiple areas in our community and it was our goal to keep the increase in assessments to a minimum. The **pandemic, inflation in general and the current supply chain issues** have increased the cost of doing business. As we execute our reserve study, projects, maintenance items and repairs, we have seen cost increases that directly affect our assessments. We took a conservative approach to continue to ensure a minimum impact on our residents. Our new rates are posted in this *Villager* and will be sent to homeowners. Single-Family Homeowners will not see an increase in their assessments, while townhomes and other areas in the community will see a small increase.

Why are townhomes paying a different assessment than single-family homes? Great question! Our townhomes pay a higher assessment, since the roads are maintained by Ashburn Village Community Association (AVCA), whereas the rest of our roads are maintained by VDOT. We must budget for repairs, replacement and snowplowing. We have seen **cost increases** in these areas along with our planned projects from our reserve study for 2022. Additionally, our apartments and other age-restricted residences have similar assessment increases. If you have any questions about assessments, **please do not hesitate to talk with our HOA Office.**

Overall, our Board of Director's priority is to keep assessments low with minimum increases. **Two years ago**, this Board **cut** assessments by almost \$10 per month, per home. We will continue to find the **best value** for all projects and look at capital improvement projects that will increase the value of our homes and increase the value for our residents. Our community is over 28 years old and we must continue to ensure our facilities are updated and new amenities are added. We appreciate your support!

If you have concerns, please send the Board your comments and/or feedback at bod@ashburnvillage.org or through our compliments and concerns form found on our website: www.ashburnvillage.org. Our November/December meeting will be on December 7, 2021, at 6:00pm. The Board of Directors encourage all homeowners to attend monthly meetings.

We celebrate multiple holidays in December. I wish everyone a very safe and happy holiday season as our residents celebrate Christmas, Chanukah, Kwanza, Las Posadas and other winter celebrations. Enjoy the time with your families and have a Happy New Year! We look forward to a happy and healthy 2022!

Very Respectfully,

Jason B. Mello

*Warmest Wishes for Happy Holidays
and a Happy New Year in a World of Peace!*





PROUD OF A RECENT INTERIOR HOME IMPROVEMENT?

Your improvement can be featured in the next Villager as home improvement of the month! Listing your address and contractor is optional. Help inspire others to make home improvements and share information on good contractors. Send photos to:

avca@ashburnvillage.org



WINTER HOME MAINTENANCE TIPS

- Winterize outside hose bib by turning off the main valve inside and draining the water. Consider installing an outdoor faucet cover to prevent freezing.
- Keep the heat on, even if absent for extended periods of time.
- Change the air filter to keep the heat running at optimal efficiency.

SHOVEL YOUR WALK!

- Be a good neighbor and clear the walk in front of and alongside your home following the end of the snowstorm.

CLEAR SNOW

- Snow is heavy and can put a great deal of strain on decks. If you can safely shovel the snow from your deck, do so.

CLEAR FIRE HYDRANTS

- Firefighters need to be able to quickly locate fire hydrants. You can help by clearing a three-foot radius around hydrants near your home.

BE SAFE

- Avoid injury and over exertion by pacing yourself and taking frequent breaks to rest. Be careful when shoveling snow, clearing ice, pushing a car, or similar activities.

STAY OFF OF FROZEN LAKES

- Never walk on frozen streams, rivers or ponds. The ice may seem thick enough to walk on, but the actual strength of the ice may be far less than it appears, particularly when temperatures rise. Ice skating is not permitted on Ashburn's lakes for the safety of our residents and guests.

INFORM YOUR CHILDREN

- It is especially important for parents to speak with their children about the dangers of walking and playing on frozen ponds and rivers. If you live near a waterway, remain watchful for children attempting to venture onto the ice.

WHAT TO DO IN AN EMERGENCY

If you should find yourself in a situation where a person has fallen through the ice, Loudoun emergency personnel ask that you:

- Do not panic
- Encourage the victim to keep calm
- Call 911 immediately
- Do not attempt to enter the water
- Extend an object, such as a tree branch or rope
- Bystanders should never enter the water or go onto the ice in an attempt to rescue a person or animal - a bystander attempting a rescue could become a victim themselves in a matter of seconds. If a dog or another animal falls through the ice, do not go to its rescue. If the ice did not support the animal, it will not take your weight.

Source: <https://www.loudoun.gov/3380/Dont-Find-Yourself-on-Thin-Ice>

CHRISTMAS TREE COLLECTION

Christmas tree collection will be provided to all homeowners during the first two weeks in the month of January. All trees must be free of ornaments and tinsel/garland, and if they are over 8 feet in length, cut in half before being placed at the curb.

Info about



Our Lakes & Ponds

*By Environmental Scientists at
Virginia Waters and Wetlands*

Storm-water facilities are an important utility for managing community runoff water. Virginia Waters and Wetlands uses an integrated pest management plan to mitigate nuisance growth effectively and sustainably. There are physical, biological, and chemical controls all used together to manage the lakes.

Physical controls for growth include aeration and pond dye. Aerators and fountains keep the water circulating, which reduces algae growth. Every lake in Ashburn has some type of aeration. Pond dye shades sunlight from the bottom of the pond, which reduces all types of aquatic growth.

As a biological control, Ashburn has triploid grass carp stocked in the lakes. These fish feed on submerged vegetation such as hydrilla and elodea. Each of the lakes in Ashburn also has a healthy vegetative buffer that helps absorb runoff, lessening the load that reaches the lake.

Finally, chemical controls are applied as needed. During large blooms of nuisance growth, Virginia Waters will spot treat the growth with appropriate aquatic herbicides.

Keeping all the lakes healthy and clear is no small task. A concerted effort by both Virginia Waters and Ashburn Village utilizing physical, biological, and chemical controls help keep your water views enjoyable.

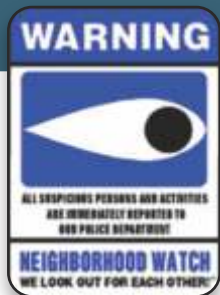
SAFETY CORNER

Safety Is Everyone's Responsibility

We have had multiple concerns from residents about trespassing, vandalism and non-residents using facilities across our community.

Please contact the **Loudoun County Sheriff Office** at 703.777.0445 to report any concerns.

For any concerns regarding fishing or wildlife, please contact the **Virginia Department of Wildlife Resources** at 1.800.237.5712.



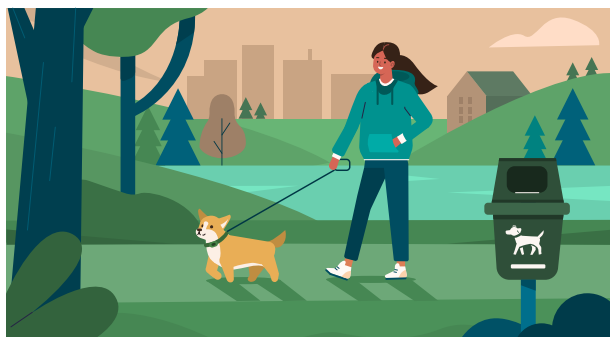
It's the LAW!



Be good to your dog and courteous to your neighbors by always using a leash, picking up after your pet, and keeping your dog off other people's grass.

Dog waste pollutes the environment and threatens public health, when it washes into the storm water drains and into our drinking supply. Leashes prevent your dog from chasing animals, people, or bikes. It's courteous to your neighbors, especially if they do not know your dog's level of obedience.

**NO DOGS ALLOWED ON
SOCCER FIELDS, BASEBALL
FIELDS, PLAYGROUNDS,
TENNIS COURTS, BASKETBALL
COURTS or SPORT COURT IN
ASHBURN VILLAGE**



**WHEN IN OPEN, UNFENCED AREAS*,
DOGS MUST BE ON A LEASH
AND UNDER CONTROL OF OWNER**

** This applies to your yard, if you do not have a fence.*



Policy Resolution Number SNOW REMOVAL 14-11-25

Effective date November 26, 2014

Ashburn Village Community Association (AVCA) is responsible for clearing snow from private streets, courts, Recreational Facility parking areas, common area sidewalks and trails. The Association will sand and treat roads as conditions warrant at the discretion of management. Sidewalks adjoining and touching the property in front, rear or either side abutting homeowner's lots are the responsibility of the homeowner. A complete list of private streets and courts are available online at www.ashburnvillage.org.

AVCA is not responsible for treating or removing snow from state or county maintained (VDOT & Loudoun County) roadways. To contact VDOT please call 703-383-VDOT (8368).

Please allow at least 18 hours for every 6" of snow accumulation for the roads to be cleared. If you're essential personnel, or are required to be available for work around the clock, please make private arrangements or park on a VDOT street.

The standards for snow removal for AVCA are as follows:

- 0-2 inches of snow - The Association will patrol the roads but will not plow most streets and courts. Exceptional circumstances may require special treatment of certain areas. Parking places, designated sidewalks and trails will not be plowed

- 3-10 inches of snow - The Association will normally begin plowing during the storm and will continue as needed after the storm ends. Roads, where conditions permit, will be plowed in **two** directions to achieve a lane as wide as possible. Parking places will not be plowed. Designated sidewalks and trails will be plowed after the storm ends.

- 10+ inches of snow - The Association will normally begin plowing during the storm and will continue as needed after the storm ends. Roads, where condi-

tions permit, will be plowed in **one** direction to achieve a lane approximately one car wide. Parking places will not be plowed. Designated sidewalks and trails will be plowed after the storm ends.

All snow removal equipment must maintain a minimum of thirty-six inches (36") of clearance from all parking spaces. The snow that accumulates within the thirty-six inches (36") is the sole responsibility of the person(s) assigned to or using the parking space. Curbside and open parking spaces will not be cleared.

The Association and its contractor have limited numbers and types of snow removal equipment. Accordingly the Association will not collect and lift snow from private streets and courts and move the collected snow to another location.

Vehicles parked curbside in the townhome areas must be moved to allow for snow removal. Failure to do so will result in a less efficient snow removal process and parked vehicles could become stuck due to snow deflecting off plows. Owners that find themselves in this situation due to an unmoved car will be responsible for clearing these areas

Please do not clear snow from driveway entrances, parking areas or vehicles and place in/on the street, thinking a plow can/will remove it. The pile will become packed and may not be cleared. If not cleared it will be the responsibility of the resident to clear this snow.

AVCA takes the safety of each resident, staff and contractor seriously. Residents shall not approach any plow or treatment vehicle during its operation. All vehicles are equipped with cameras to ensure the safety of all residents and operators.

The Loudoun County ordinance which requires county residents to clear the portion of public sidewalks through and abutting their property as stated:

1022.01 REMOVAL OF SNOW AND ICE.

a. **Removal Required.** Every occupant, owner or other person in charge of any property in the County which has a sidewalk or a footway of stone, brick, gravel, cinder, wood or other substance, when such walk is publicly owned or maintained, and is adjoining and touching the property in front, rear or either side thereof, shall have all snow and ice, and any combination thereof, removed from such sidewalk or footway within six hours after such snow or ice, or a combination thereof, has ceased falling, unless the same has fallen during the night, in which case it shall be removed before 12::00 noon following the night in which the snow or ice, or combination thereof, has fallen. In the event snow or ice, or a combination thereof, falls upon Sunday, such occupants, owners or other persons in charge shall have until 12:00 noon Monday to comply with this requirement.

b. **When Removal Not Required.** The requirements of subsection (a) hereof shall not apply when such snow or ice, or a combination thereof, cannot be removed without injury to the sidewalk or footway. In such an event, however, such sidewalk or footway shall be covered within the applicable period of time as specified in subsection (a) hereof with sand, ashes or some other substance that will render it safe for travel.

c. **Exceptions.** This section shall not apply when the occupant, owner or other person in charge of a property is prevented from fulfilling the requirements of subsections (a) and (b) hereof because of physical or mental disability or is sixty-five years of age or older, and said occupant, owner or other person in charge has made reasonable efforts to undertake alternative means for fulfilling said requirements.

Now is the time to review the Association's Snow Information

The following list will help you to be prepared for any upcoming snowstorms.

- Stay Connected! Sign up for the AVCA email blasts. Important storm information will be sent out via the email blasts.
- Review the AVCA Snow Removal Policy.
- Find out if you live on an AVCA street or VDOT street. You can also go to the Loudoun County website at www.loudoun.gov/roads and search for your street to see who is responsible for road maintenance.
- As a homeowner, you are responsible for clearing the sidewalk in front of your house or townhouse.
- If you have questions about snow removal on an AVCA street or other issue, use the online Compliments & Concerns form to report it.
- If you have questions about snow removal on a VDOT street, check the plowing status at www.vdotplows.org.

Streets That AVCA Plows

The Association is responsible for plowing the following streets and private courts in the Village:

Aberdeen	Cohasset	Laceyville	Roaming Shores
Acushnet	Colecroft	Laporte	Rootstown
Adirondack	Conesus	Lemon Springs	Rowley
Afton	Cool Fern	Litchfield	Royal Crest
Agawam	Cornish	Livonia	Saxony
Albion	Crew	London Bridge	Sebago
Allderwood	Cripple Creek	Lord Nelson	Shady Glen
Amity (private courts only)	Duryea	LordsValley	Shadowalk
Apollo	Eagle Harbor	Lost Moccasin	Shehawken
Appalachian Vista	Falmouth	Marchand	Silkworth
Birdsnest (private courts only)	Fenwick (private courts only)	Minthill	Sonora
Bitterroot	Ferncliff	Mistletoe	Suscon
Black Horse Sq	Florence	Mossy Brook	Tioga
Bonlee	Footstep	Mossy Glen	Tippecanoe
Boxford	Fowlers Mill (private courts only)	Ordinary Place (private court only)	Topsham Alley
Bristow Circle (private courts only)	Gala	Owls Nest	Tyler Too
Broadnax (private courts only)	Glenburn	Paget	Tyrone
Bruceton Mills (private courts only)	Glenhazel (private courts only)	Parliamentary	Victorias Cross
Calais	Harwich	Pickerelweed	Victor Alley
Cessna	Hillary (private courts only)	Potter	Vosburg
Chloe	Jersey Mills (private courts only)	Quiet Walk	Watertown
Choptank	Killawog (Sections 46-48)	Rainsboro Drive (private courts only)	Westmont
Clappertown (private courts only)	Kings Arms	Renova	Winola
Coburn	Kittanning	Rising Sun	Woonsocket Alley
	Kittery		
	Kitts Hill		

Broad Run District School Board Meeting

Ashburn Village recently hosted a meeting with our new Broad Run District School Board member Andrew Hoyer on October 25th at the Lakes Community Center. There were 22 in-person attendees and 12 online attendees.



Private Offices for Lease

(Starting at \$550/mo.)

Building Amenities Include:

Cafe (Breakfast/Lunch), Daily Janitorial Services, Multiple Conference Rooms, Training/Event Room, Multiple Kitchenettes, Fitness Center, Lounge Area, Free Parking & Free WIFI.

Dulles Executive Offices

44330 Mercure Circle
Dulles, VA 20166

Less than 1 mile from Route 606 Exit/Dulles Toll Rd
Walking distance to new Silver Line metro station
(expected to open in February 2022)

Call us for a Tour today! - (703) 651-2566

www.Green-Stone-Properties.com

AVCA 2022 Budget

(CONSOLIDATED)

Income

41000	Assessments	\$6,509,270
41010	Finance Fees	62,500
41050	BWST Income	333,800
42000	Program Income	379,110
42100	Special Events	38,320
42200	Aquatics	270,046
42300	AVSP Income	310,600
42400	Tennis Income	824,250
48000	Equity Contribution	99,820
48500	Commercial Income	505,887
49000	Other Income	288,000

Total Income

\$9,621,603

Expense

Operational Expenses		
50160	Wages	\$1,220,707
50170	Payroll Taxes & Benefits	112,975
50180	Other Payroll	6,708
50182	Hiring Costs	5,000
50190	Employee Benefits	18,000
51050	BWST	30,018
52000	AVSP Program Expense	325,544
52100	Special Events	99,060
52200	Aquatics	55,750
52300	AVSP	1,451,146
52400	Tennis	457,835
56900	F&G Warehouse Rent	96,000
57000	Operational	1,876,000
57035	Computer & Technology	90,000
57100	Maintenance	57,580
60000	Office	111,600
60100	Dues, Subs & Pubs	2,000
60200	Sales & Marketing	18,000
60400	Utilities	241,000
60800	Auto	25,000
60810	Business Conference & Meetings	8,000
60820	Mileage Reimbursement	2,000
60900	Professional Services	63,500
60905	Legal - General & Collections	110,000
60950	Insurance	451,500
60990	Misc Fees and Charges	66,680
61000	Bad Debt	30,000
62000	Depreciation	35,000
63000	Income Taxes	100,000
64000	Other Taxes	0,000

Total Operating Expenses

\$8,276,603

70000	Replacement Reserve Contribution	1,245,000
70003	Capital Projects Contribution	100,000

Total Reserves and

Capital Project Contributions

\$1,345,000

Total Expenses

\$9,621,603

Total Income

\$9,621,603

Net Surplus/(Deficit)

0

AVCA 2022 Assessments

The Village is comprised of a total of 5,552 units consisting of single family, townhomes, condos, age-restricted neighborhoods, and multifamily units. Commercial properties within Ashburn Village also contribute to the General Limited Common Elements.



ASHBURN VILLAGE COMMUNITY ASSOCIATION 2022 Monthly and Annual Assessment Fees:

Please be sure to update your bill pay to reflect the new assessment rates. All residents enrolled in the AVCA Direct Debit program will automatically be updated.

	MONTHLY	ANNUAL
Single Family Units	\$ 110.00	\$ 1,320.00
Townhomes Units	\$ 116.00	\$ 1,392.00
Gala Circle Townhome Units	\$ 123.00	\$ 1,476.00
Age Restricted Townhome Units (<i>excluding Ashburn Regency</i>)	\$ 143.00	\$ 1,716.00
Regency of Ashburn (<i>excluding condos</i>)	\$ 103.00	\$ 1,236.00
Condominium Units (<i>Greenbrier, Four Seasons, Lakeshore</i>)	\$ 87.00	\$ 1,044.00

Following is what is paid for by the assessments, and by whom:

General Limited Common Elements (LCE) 5,552 Units

The General Limited Common Elements (LCE) and General Sewage/Utilities Limited Common Elements (S/U LCE) are paid by all 5,552 units. These Elements are the Administrative and General Operational Elements such as newsletter, web site, Facility and Grounds, legal, and the portion dedicated to the General Reserves.

Recreational Limited Common Elements (LCE) 4,523 Units

Recreational Limited Common Elements (LCE) and Recreational Sewage/Utilities Limited Common Elements (S/U LCE) are paid by 4,523 units. Multi-Family units do not share this item as they have no use of the facilities (outdoor pools and the three Recreational centers (Lakes, Mills, and Woods).

Ashburn Village Sports Pavilion (AVSP LCE) 4,523 Units

The Ashburn Village Sports Pavilion (AVSP) Limited Common Elements (LCE) and AVSP Sewage/utilities Limited Common Elements (S/U LCE) are paid by 4,523 units. Multi-Family units do not share this item as they have no use of the Ashburn Village Sports Pavilion without paying for an outside membership.

Single Family Detached Limited Common Elements (LCE) 1,505 Units

The Single Family Detached Limited Common Elements (LCE) and The Single-Family Detached Refuse/Recycling Limited Common Elements (R/R LCE) are paid by 1,505 Single family units. This expense covers the trash contract and the Single-family portion of reserves.

Townhome Dwellings 2,550 Units

Townhomes Limited Common Elements (LCE) is paid by 2,424 townhome units for the townhome portion for reserves and snow removal on AVCA maintained roads. The Regency of Ashburn does not fund this item, as the AVCA does not maintain any property within the gates.

Townhome Refuse/Recycling Limited Common Elements (R/R LCE) are paid by 2,550 townhome units for trash and recycling.

The townhomes on Gala Circle, 88 townhome units pay all of the above as well as the utilities for exterior gas lamps.

The townhomes in the Age-Restricted area (not including Regency of Ashburn), 108 townhome units pay the TH LCE and R/R LCE as well as the monthly grounds contract for that section.

The Regency of Ashburn 126 Units

The Regency of Ashburn homes (excluding the Greenbrier Condos) participate in the General LCE, the General S/U, Recreational LCE, Recreational S/U, RF AVSP S/U and the Townhome Refuse/Recycling Limited Common Elements (R/R) as described.

Condominiums 468 Units

These 468 units (Four Seasons, Greenbrier, Lakeshore) only participate in the General LCE, the General S/U, Recreational LCE, Recreational S/U, RF AVSP LCE and the RF AVSP S/U as describe above.

**Note that assessments changed for everyone. This year we are using whole numbers.
Please update your bill and pay accordingly.**



By The Numbers 2021



5,552

1280 Applications Submitted For Exterior Modifications In 2021

(through October 31, 2021)

320 Resale Disclosures In 2021
(through October 31, 2021)



7 Board Members

5 Committees

16 Staff Members

100 Pavilion Staff
(including Summer Help)

Pavilion Owned By
Ashburn Village,
Managed By WTS -
Gayle Terrio



Dog Waste Stations

500 Acres Of
Common Area
1,300 Light Poles
500 Street Signs
8 Playgrounds,
Renovated and
Expanded In 2019

3 Community Centers

8 Lakes

19 Tennis Courts

4 Basketball Courts

2 Sport Courts

1 Baseball Field

2 Lacrosse/soccer
Fields

2 Volleyball Sand
Courts

4 Outdoor Pools

1 Indoor Pool

17

Miles Of Trails
And Footpaths



Sell Your Home for Only 4% Total Commission



How Much Money Will You Pay to Sell Your Home?

If your home is worth \$400,000, You Could Save \$8,000

If your home is worth \$500,000, You Could Save \$10,000

If your home is worth \$600,000, You Could Save \$12,000

If your home is worth \$700,000, You Could Save \$14,000

If your home is worth \$800,000, You Could Save \$16,000

By Law, realtor commission rates are negotiable. You DO NOT have to pay a 6% commission to sell your home! If your home is worth \$500,000, a 6% commission is \$30,000!

Even if you are not thinking of selling now, realize at some point in the future, you will sell your home.

At that point, you will be scrambling around trying to remember the name of that realtor from RE/MAX that sells houses for only 4%. Write down my name and phone number and keep it on your refrigerator or somewhere handy.

Call Kelly Jones at 703-585-5057 whenever you are ready to sell your home and I will honor this 4% commission rate.



Commissions may be negotiable and are not set by law.

If you have a friend, neighbor or family member who is thinking about selling their home, you could help them put \$10,000 or more in their pockets too when they sell. Pass along my name & number to them ...

EVERYBODY could use an extra \$10,000!

**** More Experience, More Marketing & More Money in Your Pocket When You Sell Your Home ****

If your home is currently listed for sale, this is not a solicitation of that listing. If your home is not listed for sale, then absolutely ... I want to earn your business.



Kelly Jones

RE/MAX 100

703-585-5057

Kelly@buyahome.net

- * RE/MAX Hall of Fame & RE/MAX Lifetime Achievement Awards
- * Over 25 Years of Experience
- * Helped over 1,000 people buy, sell and rent their homes
- * The #1 RE/MAX 100 agent in Virginia for 10 years in a row

AV Halloween Decorating Contest Winners

1st Place



2nd Place



3rd Place



Grand Opening of Fincastle Field

Ashburn Village residents attended the grand opening of the renovated Fincastle baseball field, sand volleyball court, and sport courts.



Marck Rossy, General Manager;
Jason Mello, Board President;
Morgan Busick, Member Services

Thank you to The Inside Scoop for
providing ice cream.

Thank you Morgan in member
services for organizing the event.

Home Improvements are on Sale Now!

Take up to **\$500 off** any
replacement project, or
choose **No-Money-Down,**
0% Financing*!

Use This Coupon to Receive Up to

\$500 OFF

Any Replacement Project

Get \$250 off project valued at \$5000 or more.
Get \$500 off any project valued at \$10,000 or more.
Valid 12/1/21 - 12/30/21. Not valid on repairs. Must present
coupon at contract signing to qualify. Cannot be combined
with other offers. Not valid if obtaining financing from S&K.
Valid for homeowners only. Call for details. CODE: IA1221

*Financing subject to credit approval. Call for financing details.



Roofing • Siding • Windows
Worry Free. Guaranteed.

SKRoofing.com 866-836-7663

VA License #2705 105665

Credit cards accepted. Financing available.



Introducing Our Newest AVSP Personal Trainer: Shelby Tsu



Certifications :
Bachelor's degree in Exercise Science, Associate's degree in Physical Therapy Assisting, Certified Personal Trainer (NASM), CPR/AED & First Aid (American Red Cross)

Specialties :
Women's Fitness, Return to Sport, Balance Training

Background :

Shelby's love of fitness and exercise began at a young age. In her youth she loved competitive swimming and running. She has since competed in many triathlons and running races. Strength training has always been a foundation to her fitness.

In college, she explored many different fitness-related career options and found a passion for orthopedic impairments and functional rehabilitation. After graduating, she worked as a physical therapist assistant for a number of years before taking a brief hiatus to spend time at home with her two daughters.

Shelby shares her passion for exercise with everyone she meets and aspires to help each client achieve their full potential. Shelby loves the phrase: "Fit is not a destination, it is a way of life" and truly believes that exercise not only helps you reach your goals, but will also improve the quality of your life.

To schedule a free fitness assessment with Shelby or any of the AVSP Trainers, email shoaglund@ashburnvillage.org.

**ASHBURN VILLAGE
SPORTS PAVILION**



**CARDIO
TENNIS**
With MONIKA!!

*All levels welcome

Wednesdays
7:30-8:30PM

\$22 Residents
\$24 OTMs

Sign-up sheet in Bubble or
Call 703-729-0581 to register!!

Made with PosterMyWall.com



2022 Winter Tennis Session
January 3rd - February 27th
Registration
Members December 1st, 2021
OTM December 15th, 2021

2022 Spring Tennis Session
February 28th - May 1st
No Classes Spring Break April 11th - April 17th
Registration
Members February 1st
OTM February 15th

Questions?
Bleahy@ashburnvillage.org
Tennis@ashburnvillage.org



*Happy
Holidays*

Holiday Special Intro to Personal Training Package

- Fitness Assessment
- Three 30 minute Personal Training Sessions

\$99

BONUS : Any Intro to Personal Training Package purchased in December or January will also receive an Inbody scan at no additional charge (\$39 value).

*For new PT clients only.
Can only be purchased one time.*

Reach out to shoaglund@ashburnville.org for more information!

DID YOU KNOW?

GROUP EXERCISE CLASSES ARE ONE OF THE MOST EFFECTIVE WAYS TO GET FIT, LOSE WEIGHT, BOOST MOTIVATION, AND MAKE EXERCISING MORE FUN.

WE OFFER MORE THAN 30 WEEKLY GROUP EXERCISE CLASSES AT NO ADDITIONAL CHARGE FOR AVSP MEMBERS.

TRY ONE TODAY!



SAVE THE DATE!

Questions? events@ashburnville.org

DID YOU KNOW?

Tennis is a great sport to get your heart pumping, your quads and hamstrings firing, and your competitive side engaged.

FREE BEGINNER'S TENNIS CLASS

WE OFFER A FREE WEEKLY CLASS FOR AVSP MEMBERS EVERY SATURDAY 8:30AM-9:30AM

REGISTRATION IS WEEKLY AND IS FIRST COME FIRST SERVE.

BRING YOUR OWN RACQUET, WATER AND AN EAGERNESS TO LEARN



H.E.L.P Wellness Expo

**Saturday, January 22
9:00 AM - 1:00 PM**

Join Ashburn Village Sports Pavilion's Annual Health Expo! This free event is open to the public. We'll have:

- Fitness Challenges
- Swim Lesson Evaluations
- Moon Bounce
- Healthy Vendors
- Live Music with DJ
- Exercise Clinics
- Face Painting
- Loudoun County Sheriff's Office

and more!



SAVE THE DATE!

Questions? events@ashburnville.org



Group Swim Schedule Winter 2021/22

WEEKDAY SCHEDULE				
DAY	LEVEL	TIME	INSTRUCTOR	ONLINE CODE
Mondays	Level 2A	6:00-6:30 PM	Evelyn	GS137
	Level 2B	6:30-7:00 PM	Evelyn	GS138
	Level 3	3:15-3:45 PM	Rylie	GS81
	Level 3	7:00-7:30 PM	Evelyn	GS139
	Level 4A	3:45-4:15 PM	Rylie	GS86
TUESDAYS	Level 4A	7:30-8:00 PM	Evelyn	GS140
	Level 1	6:15-6:45 PM	Carson	GS141
	Terrific 2's	10:00-10:30 PM	Kristina	GS90
	Level 2B	9:30-10:00 AM	Kristina	GS69
	Level 2B	6:30-7:00 PM	Madison	GS70
	Level 2B	6:45-7:15 PM	Carson	GS142
	Level 3	7:05-7:35 PM	Madison	GS83
	Level 3	7:15-7:45 PM	Carson	GS145
WEDNESDAYS	Level 4A	7:40-8:10 PM	Madison	GS88
	Level 2A	6:50-7:20 PM	Caroline	GS73
	Level 2B	6:15-6:45 PM	Caroline	GS78
THURSDAYS	Level 4A	7:25-7:55 PM	Caroline	GS87
	Level 2A	6:15-6:45 PM	Carson	GS148
	Level 2B	6:45-7:15 PM	Carson	GS143
FRIDAYS	Level 3	7:15-7:45 PM	Carson	GS146
	Terrific 2's	10:00-10:30 AM	Kristina	GS97
	Terrific 2's	10:30-11:00 AM	Kristina	GS98
	Terrific 2's	11:00-11:30 AM	Kristina	GS116
	Level 3	3:15-3:45 PM	Carson	GS147
	Level 2B	3:45-4:15 PM	Carson	GS144
	Level 4A	4:15-4:45 PM	Carson	GS149

WEEKEND SCHEDULE				
DAY	LEVEL	TIME	INSTRUCTOR	ONLINE CODE
SATURDAYS	Level 2A	10:30-11:00 AM	Evelyn	GS71
	Level 2B	11:05-11:35 AM	Evelyn	GS79
	Level 3	11:40-12:10 PM	Evelyn	GS82
	Level 4A	10:00-10:30 AM	Evelyn	GS94
SUNDAYS	Level 1	8:50-9:20 AM	Naska	GS91
	Level 1	11:10-11:40 AM	Naska	GS72
	Level 2B	10:00-10:30 AM	Naska	GS80
	Level 2B	11:45-12:15 PM	Naska	GS75
	Level 3	10:35-11:05 AM	Naska	GS85
	Level 4A	9:25-9:55 AM	Naska	GS89

MONTHLY FEES

One session per week | 30-minute class
Member: \$45 Non-member: \$60

REGISTRATION INFO

Registration is ongoing. You can register any time by contacting Kristina Hart, Director of Swim Programs, khart@ashburnvillage.org

Frozen Jets Schedule Winter 2021/22



WEEKDAY SCHEDULE				
DAY	LEVEL	TIME	INSTRUCTOR	ONLINE CODE
MONDAYS	Level 1	4:15-5:00 PM	Andrew	FJ39
	Level 2	5:00-5:45 PM	Andrew	FJ45
TUESDAYS	Level 2	7:15-8:00 PM	Kevin	FJ57
	Level 3	4:30-5:15 PM	Andrew	FJ58
WEDNESDAYS	Level 1	4:15-5:00 PM	Andrew	FJ40
	Level 2	5:00-5:45 PM	Andrew	FJ46
THURSDAYS	Level 3	4:30-5:15 PM	Andrew	FJ59
	Frozen Squirts	5:15-6:00 PM	Rylie	FJ38
FRIDAYS	Level 1	6:45-7:30 PM	Andrew	FJ47
	Level 2	7:30-8:15 PM	Andrew	FJ47

WEEKEND SCHEDULE				
DAY	LEVEL	TIME	INSTRUCTOR	ONLINE CODE
SATURDAYS	Level 1	9:30-10:15 AM	Andrew	FJ60
	Level 1	10:30-11:15 AM	Andrew	FJ41
	Level 2	11:15-12:00 PM	Andrew	FJ49
SUNDAYS	Level 1	9:00-9:45 AM	Kevin	FJ43
	Level 2	9:45-10:30 AM	Kevin	FJ48
	Level 1	10:30-11:15 AM	Andrew	FJ44
	Level 2	11:15-12:00 PM	Andrew	FJ50

MONTHLY FEES

One session per week | 45-minute class
Member: \$68 Non-member: \$80

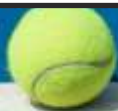
Swim Lessons

PRIVATE SWIM LESSONS

5 (30) minute swim lessons
Member: \$145
Non-Member: \$245

SEMI- PRIVATE SWIM LESSONS

5 (30) minute swim lessons
Member: \$188 (\$94 each swimmer)
Non-Member: \$265 (\$132.50 each swimmer)



2022 Winter Tennis Session

January 3rd - February 27th
Registration

Members December 1st, 2021
OTM December 15th, 2021

2022 Spring Tennis Session

February 28th - May 1st

No Classes Spring Break April 11th-April 17th
Registration

Members February 1st
OTM February 15th



Questions?

Email Bleahy@ashburnvillage.org
or
Tennis@ashburnvillage.org

Winter Break Camp

ASHBURN VILLAGE SPORTS PAVILION

Dates:

December 20th-23rd & 27th-30th
Camp Hours: 8am - 6 pm

Camp Pricing:

Sign up for ALL 8 days \$30 per day, 7 days \$40 per day, 6 days \$50 per day, 5 days or less \$60 per day

Activities include: Gym Games, Classroom Activities, Holiday Crafts, Afternoon Swim, and MORE!

Please contact Youth Program
Director, Erin May, at
Emay@ashburnvillage.org
for more information or to register.



Ring in the New Year with a Teacher Work Day Camp

ASHBURN VILLAGE SPORTS PAVILION

Dates:

Monday, January 31st and Tuesday,
February 1st

Camp Hours: 8am - 6pm

Pricing:

Members: \$50 for one child and \$45 per siblings

Camp Activities include: Gym Games, Classroom Activities, STEM, Free Swim in the afternoon, and MORE!

Please contact Youth Program Director, Erin May, at
Emay@ashburnvillage.org for more information or to register.



Making Spirits Bright!

Residents are able to "adopt" a local child for the holidays and purchase gifts from their wish list. The Salvation Army's Angel Tree will be located in the lobby at the Ashburn Village Sports Pavilion.

Please ask the Front Desk for assistance when picking a tag.



For questions, email us at events@ashburnvillage.org.



merry + bright

Ashburn Village Annual Holiday Lights Contest

December 10th-15th

Register at ashburnvillage.org/events
Register by December 7th to be included on the map

Voting is open to all Ashburn Village Residents. Awards will go to the top three in two categories: Single Family and Multi/Townhouse and one Best Block. The listing of registered homes and voting instructions will be available online starting December 10th and will also be emailed out.

We encourage neighbors to coordinate their efforts to decorate a whole block together! If a home is not entered, we might miss it. Be sure to get out there this season and catch your neighbors beautiful displays. We recommend using timers at dusk.

For more info contact Katie / 703-729-0581 ext. 213 /
Events@ashburnvillage.org



ASHBURN VILLAGE Santa Stop

ASHBURN VILLAGE SPORTS PAVILION
December 4th 4:30pm-7:30pm



Grab your family and bundle up! Come on out and get your picture taken in the sleigh with a "reindeer" and Mrs. Claus. Snap a pic and wait around or come back later.

There will be hot chocolate and a sweet treat, holiday music and more to enjoy while waiting for Santa to arrive on the AVFRD Fire Truck. Please note this is a pet free event.

Questions? events@ashburnvillage.org



DONATE to the ReStore

Home goods, furnishings, appliances and building supplies

Free pick-up of large items.

Schedule online, loudounrestore.org or call, 571-919-6330



Loudoun Habitat for Humanity

700 Fieldstone Drive | Leesburg, VA 20176 | (571) 919-6330
Tuesday - Saturday 12 p.m. - 4 p.m. | www.loudounrestore.org



Spring into the Season at Stream Valley Vet!

"All pets deserve Concierge Care.
We have been the other family doctor for many local families spanning 20 years! We can assure your pet is not just a figure on a balance sheet."

- Mary A. Corey, D.V.M.

Preventive & Diagnostic Medicine

• Surgery & Dentistry • Obedience Classes •
Boarding • Doggie Daycare • Professional Grooming

Emergencies

Pet emergency?
Let us triage and
treat or stabilize!

Behavior Consultations

Listening troubles?
We'll "Better the Bond"
by helping solve any
behavior issues.

Exotic Care

Furry, feathered or
scaled pet not
feeling well? We will
be their doctor too.

Hours of Operation

Monday - Friday: 7 AM - 7 PM
Saturday: 8 AM - 3 PM
Sunday (boarder pick up only): 5 PM - 7 PM

Modern Medicine • Hometown Hospitality

Stream Valley
Veterinary Hospital



We're just a few feet away!



703.723.1017
42902 Waxpool Road
Ashburn, Virginia 20148
www.streamvalleyvet.com

Follow us!



@streamvalleyvet



UPCOMING EVENTS

Christmas Tree & Wreath Sales – Station 6, Ashburn Road

Our annual Christmas tree Sale at the Firehouse is already well under way. Hurry and select the tree of your choice; we anticipate selling out early as supplies are limited this year.

Christmas Ornaments

AVFRD 2021 Commemorative ornament: Some are still available for last-minute gift giving or a keepsake for yourself. For more information and how to order go to: ashburnfirerescue.org/go/ornaments

Pancake Breakfast: December 12th

After almost two years 's **WE'RE BACK!!** Please join us on **Sunday, December 12th** at our Holiday Pancake Breakfast! More information about the event can be found here: ashburnfirerescue.org/go/pancake-breakfast

Come play Virtual Holiday BINGO with us -

Sunday, Dec 12th ~ 4pm - 6pm. This Zoom event is free but donations are greatly appreciated! Registration is required. For more information and how to register, please visit: ashburnfirerescue.org/go/bingo

Prospective Members Meeting

Tuesday, December 28th - 7:00 - 9:00pm. Learn more about volunteering with AVFRD. Operations and Admin members needed. Many benefits. See our website for more information and how to start the application process: ashburnfirerescue.org/go/volunteer/

Save the Date

The ever popular "**Chilly Days Chili Fundraiser**" at **Old Ox Brewery: Saturday, January 22nd, 2022 ~ Noon - 4pm.** This is not a ticketed event, however a donation at the door is encouraged. There will be at least 8 different local venues supplying free samples of their chili. Go to our website for updates: ashburnfirerescue.org/events

Founders Hall - Stations 6, Ashburn Road

With modern amenities and simple rental terms, this is the right choice for your event - big or small. Accessible, friendly, and fun for you, family, friends and more! For more details and information go to: founders-hall.com or email: info@founders-hall.com

CLASSIFIEDS

HOME IMPROVEMENT SPECIALIST - Low rates for basements, drywall, fences, decks, and small jobs. 30 years carpentry experience. Member Loudoun County Chamber of Commerce. Excellent Ashburn Village references available. Licensed/ insurance. Call Chris at **571.577.7300**.

FROST SHADES - Summers in Virginia can be brutal. It's difficult to keep your home's temperature even throughout. Closing blinds and drapes helps, but who wants to sit in the dark? Frost Shades' premium window film solutions can help keep your room cool without sacrificing sunlight. Visit www.frostshades.com/dc to schedule a complimentary estimate.

Virtual & Mobile NOTARY SERVICES. Contact Ron @ **202.375.0616** cell.

HANDYMAN SERVICES - For repairs in your home. Small jobs and odds and ends. Plumbing, electrical, water heater replacement, bathrooms, and more. Free estimates. Call: **571.426.2126**

SUNDAY	MONDAY	TUESDAY	WEDNESDAY	THURSDAY	FRIDAY	SATURDAY
Please refer to the community website for January 2022 Meetings & Events			1 Virtual Ad-Hoc Landscape Committee Meeting 7pm	2 Board Orientation Virtual Meeting 6pm Virtual AERC Meeting 6pm	3	4
5	6	7 Virtual Board Meeting 6pm Virtual Raquet Steering Meeting 6pm	8	9	10	11 Ashburn Classics Meeting 6pm
12	13 Virtual Events Committee Meeting 5:30pm	14	15	16 Finance Committee Meeting 7pm	17	18
19	20	21 <i>First Day of Winter</i>	22	23 HOA OFFICE CLOSSES AT 3PM	24 <i>Christmas Eve</i> HOA OFFICE CLOSED	25 <i>Christmas Day</i>
26	27	28	29	30 HOA OFFICE CLOSSES AT 3PM	31 <i>New Years Eve</i> HOA OFFICE CLOSED	



AVSP HOLIDAY HOURS

Friday, December 24th	5am-1pm
Saturday, December 25th	CLOSED
Sunday, December 26th	7am-6pm
Monday, December 27th	5am-8pm
Tuesday, December 28th	5am-8pm
Wednesday, December 29th	5am-8pm
Thursday, December 30th	5am-8pm
Friday, December 31st	5am-1pm
Saturday, January 1st	CLOSED

The Pool and Tennis Bubble close 30 minutes prior to the facility



Kenny Williams Construction Inc.



703-771-8727

Decks ... Porches ...
Finished Basements ... Additions & More

Call us to discuss your project!

Serving Loudoun County for 40 Years.
Great References - Licensed & Insured

The Christ Accounting Group Lori Christ, CPA LLC



Lori@LoriChristCPA.com
703-304-5173

- Individual Tax Planning & Preparation
- Bookkeeping for Small Businesses
- Monthly Financial Statements
- Business Tax Consulting & Preparation
- Small Business Set up
- Sales Tax Returns, Payroll Tax Reports

Certified Public Accountant – Enrolled to Practice before the IRS



44025 Courtland Drive
Ashburn, Virginia 20147

Presorted Standard
U.S. Postage
PAID
Dulles, VA
Permit No. 3

Happy New Year Ashburn Village



**Animal
Medical
Centers of
Loudoun**

Is a New Pet
In Your Future...
\$25 Off
all first time
office visits
(expires 1/30/22)



ASHBURN FARM 703-726-8784

43330 Junction Plaza Blvd. - Suite 172 - Ashburn

BRAMBLETON 703-327-8471

42385 Ryan Road - Suite 112 - Ashburn

TRUSTED SINCE 1907
HODGES
WINDOWS & DOORS

**D.C. Metro's
Most Trusted Window
& Door Company**

703.532.0184
hodescompany.com

44190 Waxpool Road, #192, Ashburn, VA 20147
120 W. Jefferson Street, Falls Church, VA 22046

LOCALLY OWNED & LICENSED AND INSURED



ProVia
PLATINUM
DEALER 2020

\$200 off
ProVia entry doors, installed
(does not include storm doors)

10% off
ProVia or Sunrise Vinyl Windows